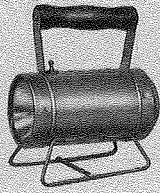


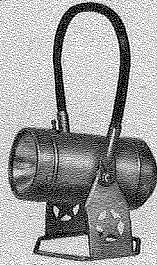
Guiding the World's Railroads Since 1889



MODEL 204-2B



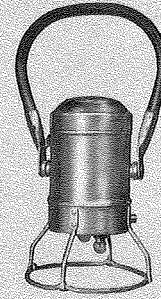
MODEL 178



MODEL 179



MODEL 180



MODEL 202-R



MODEL 275-F



STAR

HEADLIGHT & LANTERN CO.

ROCHESTER 6, NEW YORK
HONEOYE FALLS, NEW YORK



STAR HEADLIGHT & LANTERN CO.

ESTABLISHED 1889. Sixty-three years of producing fine quality lighting equipment for America's railroads is the record of performance of the Star Headlight & Lantern Company. Today, Star Headlight continues to grow and expand its products and services to the railroads and industrials. This catalog is devoted to the line of Star Electric Lanterns which are in use on nearly every Class I railroad in the country.

HEADLIGHTS. A good number of mighty freight and passenger trains that whistle along the rails in the darkness of night see their way with powerful headlights manufactured by Star Headlight. Cases for these headlights can be made to special design.

GENERATORS. Star Loco Light Turbo Generators for steam locomotives complement the line of locomotive headlights made in 500 watt 32 volt capacity. See separate catalog.

ELECTRIC LANTERNS. Since 1930, Star has concentrated on Electric Railroad Lanterns. Realizing the immeasurable importance of dependable signal lanterns, Star has set rigid standards, which in many instances, surpass those of the A. A. R.

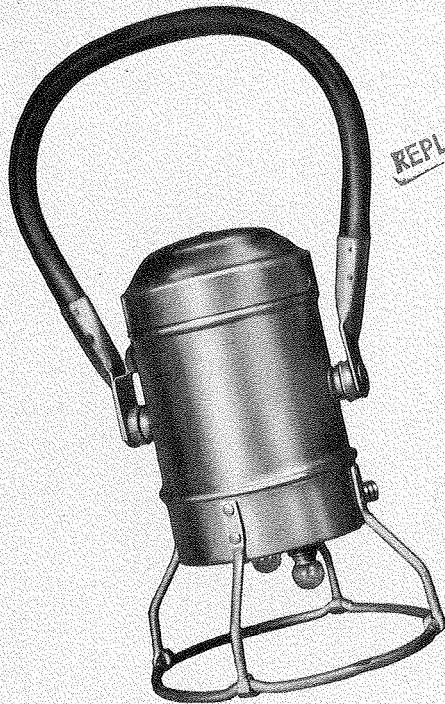
ELECTRIC LANTERNS ARE THE MOST DEPENDABLE, SAFE, EFFICIENT SOURCE OF LIGHT

Modern battery operated lanterns are replacing old fashioned oil and carbide lights on nearly every railroad. This new trend in railroad lighting is taking place because of the added advantages of safety, dependability and efficiency found only in electric lanterns. Neither wind, snow nor rain can put out an electric lantern. There is no smokey soot to cloud the globe and reduce visibility, no

wick to trim and adjust, no oil can to fill, or globe to clean. Tests prove conclusively that electric lanterns are superior in visibility and durability to any other type of lantern, and will operate even if the globe is broken.

For today's modern railroads, there is no better type of light than an electric lantern, and there is no finer electric lantern than STAR.

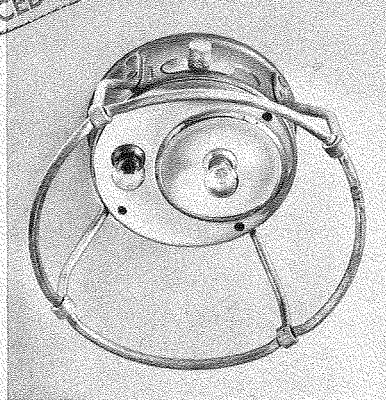
MOST POPULAR TRAINMAN'S LANTERN IN USE TODAY



MODEL 202-R
height with bail extended 13"
weight 1 lb., 4 oz.

Model 202, economically priced with plastic bail, and similar to Model 202-R, is available without locking clip.

REPLACED BY MODEL 202-SC



DUAL-PURPOSE LANTERN

This twin bulb lantern can be used for either spotting or signaling. The bulbs are set in a triple-plated, highly polished reflector; one to produce a strong, bright light for signaling without flicker. A powerful spot light from the other bulb is produced from an embossed parabolic reflector (Fig. 2). No other make of lantern can as yet equal the spot obtained from the one-piece reflector.

TROUBLE-FREE SWITCH

Railroad men appreciate the positive-acting switch which has positive registration in 3 positions; the switch is completely waterproof and is conveniently located; no groping for an elusive switch.

POSITIVE LOCKING BAIL

The long-wearing fiber bail is large enough to permit carrying lantern on your arm. A unique bail locking clip eliminates wingnuts which are easily lost, and holds the bail in a rigid position.

RUGGED, PRACTICAL CONSTRUCTION

WATERPROOF. A great deal of careful study was given to the design of this lantern for the severe service encountered in train operation. The body is drawn of one piece rust-resistant steel to prevent troublesome leakage into the switch. No longer does the railroad man have to worry about light failure due to rain, sleet or snow.

RUGGED GUARD. A rigid, extra-heavy wire guard protects the bulbs. It is strong enough to support the weight of a man, yet does not interfere with the light.

RUSTPROOF. The body on the 202-R, as on all other

Star lanterns, is rust resistant. It will keep its like-new appearance for years regardless of weather conditions.

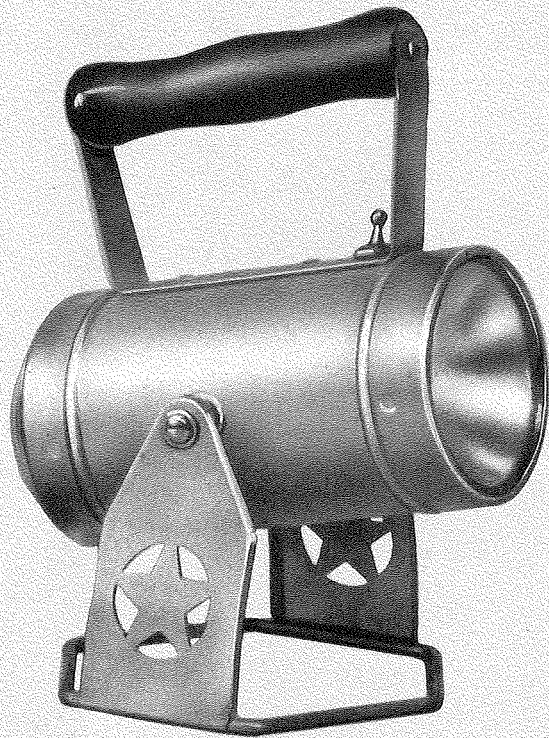
LONG LIFE. Any standard 6-volt lantern battery will operate the Star 202-R providing steady, dependable light. Bulbs: Mazda 502 or No. 27. (Furnished less bulbs and batteries.)

LIGHTWEIGHT. You can carry the 202-R over your arm all night hardly realizing it is there, yet its rugged construction demands no pampering.

CAR INSPECTOR'S

Star Car Inspector's Lanterns are fast becoming favorites on principal railroads all over the country where the trend is to switch to electric lanterns. Each Star lantern is made to meet the rigid requirements where dependability is vital. Star lanterns are precision-made to assure peak performance . . . they are rugged, compact and require little servicing other than periodical changing of bulb and battery.

Illustrated on these two pages are three popular car inspector's models. Notice that each lantern has the approved toggle switch conveniently located under the handle, permitting the user to quickly snap the light on and off with his thumb while holding the lantern. All models come equipped with No. 27 bulb; take standard lantern battery.



MODEL 180

8½" height, 6¾" length, 1 lb., 5 oz. weight.

Features a fixed handle and adjustable base. Ideal for car inspectors, as well as electricians, maintenance men, etc. A rigid non-tipping base holds the lantern in any desired position, directing the light at any angle. Toggle switch can be operated with carrying hand leaving other hand free.

LIGHT WEIGHT—RUSTPROOF

All Star inspector's lanterns are made of durable aluminum alloy and so are not affected by leaky batteries. They are extremely light in weight enabling operator to inspect faster. They are completely weatherproof.

SHOCKPROOF

Star lanterns are built to withstand the rough treatment encountered in railroad and industrial service.

LIGHT PATTERN

The importance of the correct light pattern cannot be overemphasized. All models are designed to give a smooth, bright light without dark spots or rings. Essentially, the pattern is a flood light with a center spot.

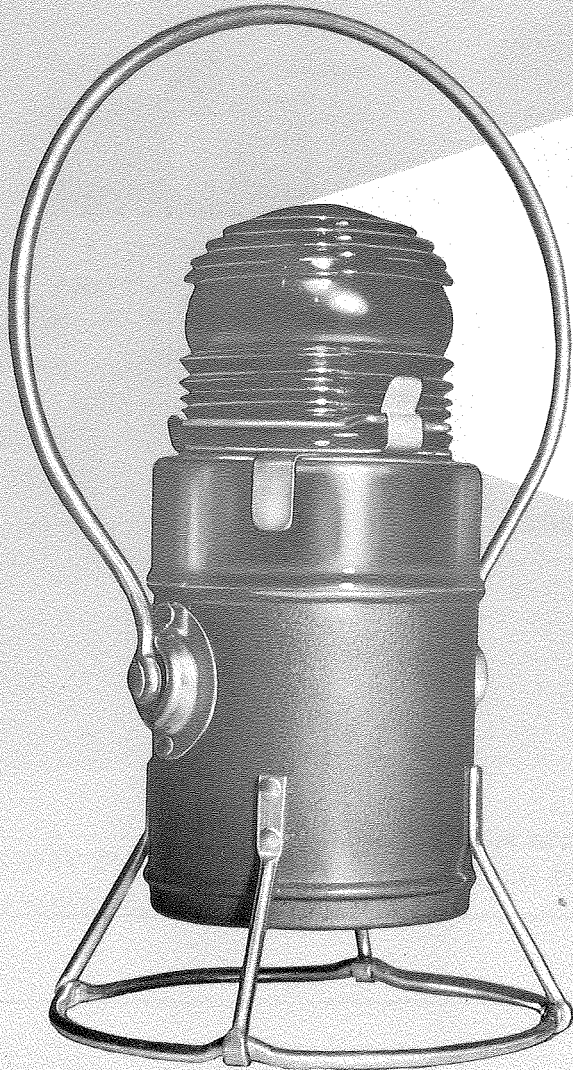
USED BY SPORTSMEN, NIGHT WATCHMEN, OIL WELL OPERATORS

FLASHING BLUE LIGHT FOR CAR INSPECTORS



Model 215-T

A Distinctive New Lantern !



Equipped with Transistorized Flasher Unit, sixty flashes per minute. Light gives strong true BLUE light; has the extra life-saving advantage of persistent eye-catching flashes much more prominent than the steady burning BLUE light. Gives over 200 hours uninterrupted service from one standard battery. Fresnel globe gives 360° visibility. Two lamps are mounted on a movable block and controlled by switch lever. If one lamp burns out, the other may be manually lighted instantly by simply moving switch lever--no need to replace lamp. Clip inside globe holds spare lamp. For greater economy light can be furnished with day-light controlled photocell (optional at extra cost).

Flashing Rate 60 per minute
 Flash Duration 1/10 second
 Lamps 2 - Star #2073 -502
 Globe 360° Fresnel type lens -- Color BLUE
 (Also available in red, green, & yellow)
 All colors to A.A.R. color specifications
 Approximate Beam Candlepower -15
 Battery One six-volt lantern type
 Service Life 200 hours
 Case One piece drawn steel case,
 electro-zinc coated.
 Finish Baked enamel blue
 Net Weight, less battery 1 lb. 13 oz.
 Net Weight, with battery 3 lbs. 4 oz.
 Overall height 11"
 Diameter at base 5-3/8"
 Operating temperature range . . -20°F. to +135°F.
 Temperature compensated circuit maintains
 uniform flashing rate throughout entire temp-
 erature range.
 Flashing Unit Transistorized circuit; close-
 tolerance components combined to give
 military reliability.



STAR HEADLIGHT & LANTERN CO.

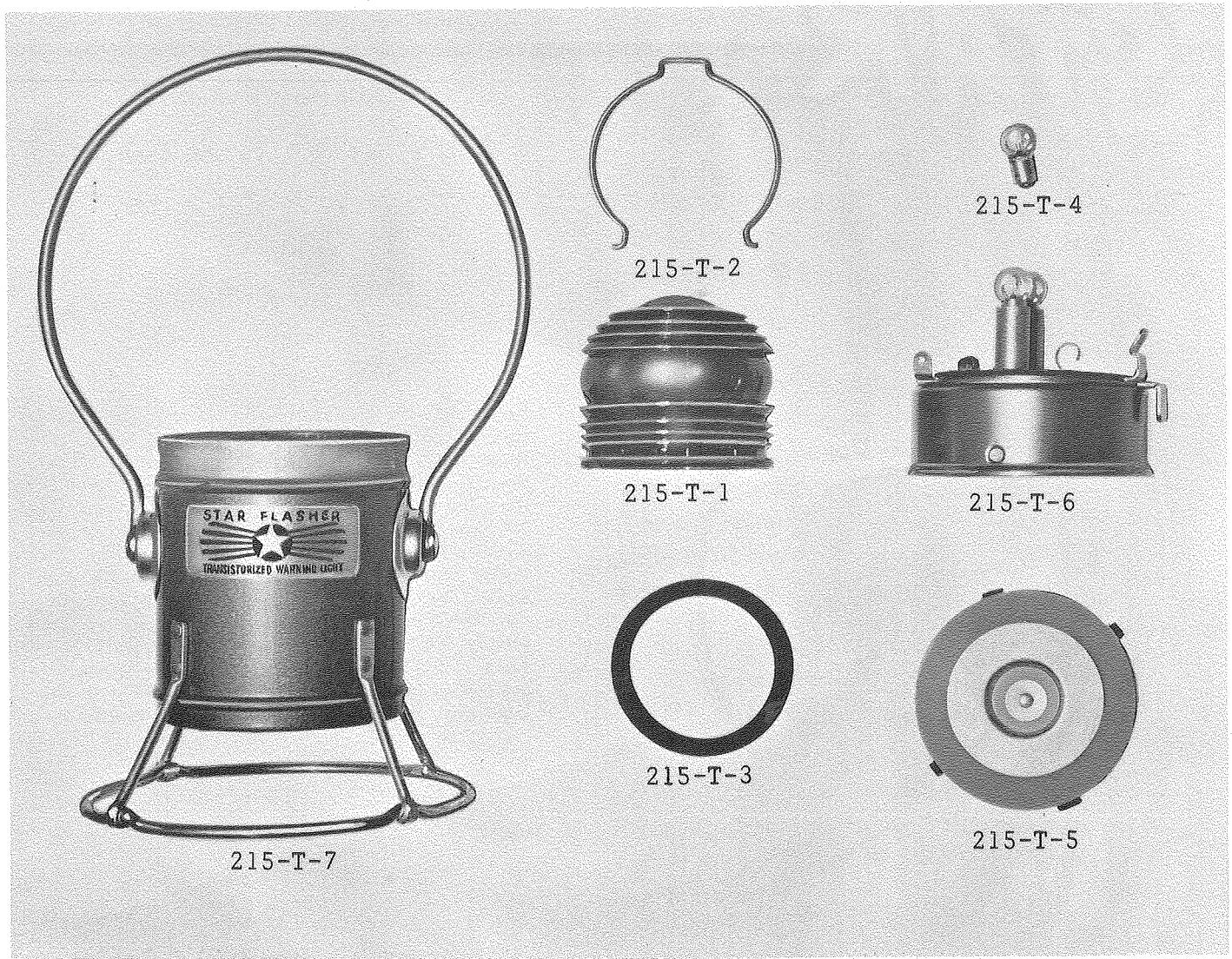
INCORPORATED 1889

ELECTRONICS DIVISION, 168 West Main St., Honeoye Falls, N. Y., U. S. A.

PHONE: 716 624-1700

CAT. NO. 215-66

**REPLACEMENT PARTS
FOR
MODEL 215-T TRANSISTORIZED BLUE LIGHT**



When ordering replacement parts specify both the
Item Number and Part Number

Item Number	Part Number	Description
215-T-1	2047	Globe (specify color) (Blue, Red, Green or Yellow)
215-T-2	2059	Globe Clamp
215-T-3	2066	Gasket
215-T-4	2073-502	Lamp (2 req'd)
215-T-5	2179	Flasher Unit
215-T-6	2182	Socket Assembly
215-T-7	2183	Case Assembly, complete

Star Headlight and Lantern Company, Electronics Division
168 West Main Street, Honeoye Falls, N. Y., USA

REPLACED BY MODEL 215-T

FLASHING SAFETY LANTERN

MODEL 215-F
height with bail extended 15"
weight 1 lb., 13 oz.

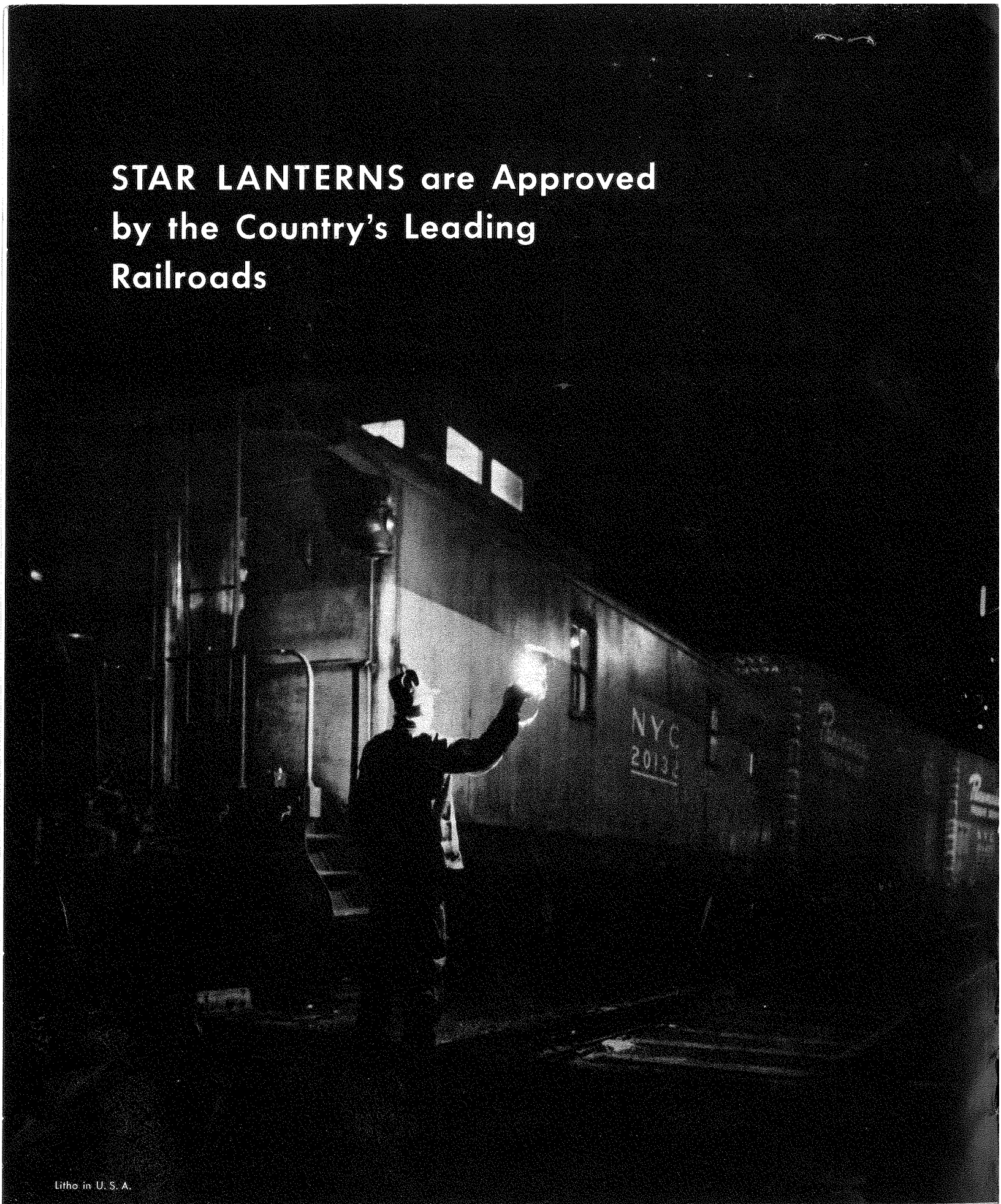
Two separately lighted bulbs for complete visibility in all directions. Equipped with flasher unit for flashing on and off 50 times per minute. Lantern gives off a strong sure light and has extra lifesaving advantage of persistent, eye-catching flashes. Gives uninterrupted service for 70 to 80 hours. Light burns steady when battery is low signifying time to change battery.

MODEL 215. Same as Star Model 215-F but without flasher unit.



GUIDING THE WORLD'S RAILROADS SINCE 1889

**STAR LANTERNS are Approved
by the Country's Leading
Railroads**



Litho in U. S. A.

WHEN LIFE DEPENDS ON A LIGHT—SPECIFY STAR LANTERNS