

Model	dB	AMP	vdc	SAE J994
<b>STANDARD</b>				
66-087	87	.3	10-32	X
66-097	97	.3	10-32	X
66-097-12	97	.3	12	X
66-102	102	.3	10-32	
66-107	107	.4	10-32	X
<b>DUAL TONE</b>				
66-097DT	97	.3	10-32	
66-102DT	102	.3	10-32	
<b>AUTO-ADJUST</b>				
66-707A	77-97	.4	10-32	
66-802A	82-102	.4	10-32	X
66-807A	87-107	.4	10-32	X
<b>STAR SPECTRUM</b>				
66-087SS	87	.3	10-32	
66-092SS	92	.3	10-32	
66-097SS	97	.3	10-32	X

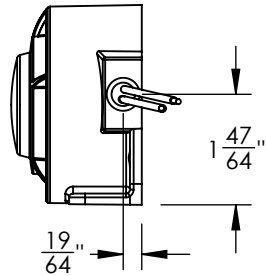
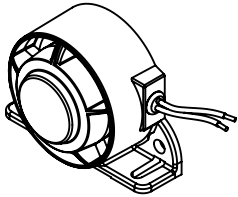
Model	dB	AMP	vdc	SAE J994
<b>STANDARD</b>				
66L-087	87	.3	10-32	X
66L-097	97	.3	10-32	X
66L-097-12	97	.3	12	X
66L-102	102	.3	10-32	
66L-107	107	.4	10-32	X
<b>DUAL TONE</b>				
66L-097DT	97	.3	10-32	
66L-102DT	102	.7	12	
<b>AUTO-ADJUST</b>				
66L-707A	77-97	.4	10-32	
66L-802A	82-102	.4	10-32	X
66L-807A	87-107	.4	10-32	X
<b>STAR SPECTRUM</b>				
66L-097SS	97	.3	10-32	X

REV.	ECR	DESCRIPTION	DATE
-	9850	INITIAL DRAWING REQUEST	8/1/11
B	14041	REMOVED 66-107-12, 66-107-24, 66L-107-12, 66L-107-24 AND 66-107DF-24-6. ADDED 66-107, 66L-107. UPDATED VOLTAGE AND CURRENT DRAW	3/9/2017
C	14498	REMOVED MODEL 66L-107-12, vdc FOR 66802S 10-32 WAS 12-36, vdc FOR 66-097DF 10-32 WAS 12-36, ADDED AGENCY APP. 66-807A & 66L-807A	7/13/17
D	15130	UPDATED MODEL CHARTS FOR VOLTAGES AND SAE	4/3/2018

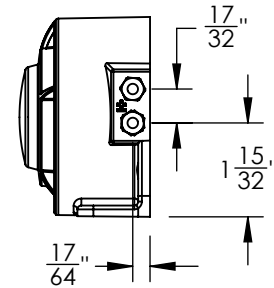
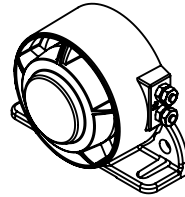


Model	dB	AMP	vdc
<b>SELECTABLE</b>			
66-802S	87 or 102	.3	10-32
66-907S	97 or 102	.7	12
<b>DUAL FUNCTION</b>			
66-097DF	97	.3	10-32
<b>STAR SPECTRUM NIGHT SILENT</b>			
66-087SSNS	87	.4	10-32
66-097SSNS	97	.4	10-32
<b>NIGHT SILENT</b>			
66-087NS	87	.4	10-32
66-097NS	97	.4	10-32
66-102NS	102	.4	10-32

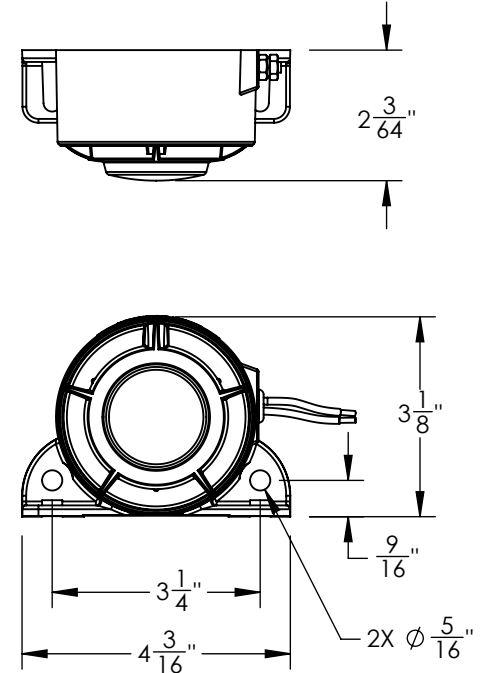
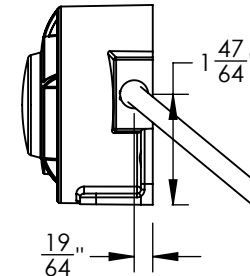
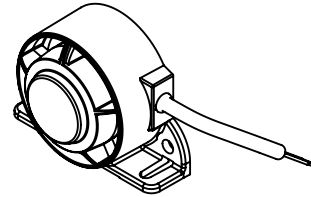
**66-\* SERIES  
w/ 9" WIRES**



**66L-\* SERIES  
w/LUGS**



**66-\* SERIES  
w/ 12" CABLE**



- △ ALL REMAINING MEET THE ACOUSTICAL REQUIREMENTS OF SAE J994
- TEMPERATURE RANGE: -40 TO +85C
  - dB TOLERANCE: ± 4 dB

**UNLESS OTHERWISE SPECIFIED**

DIMENSIONS ARE IN INCHES

TOLERANCES:

ANGULAR: ± 2 DEG.

.X ± .100  
.XX ± .020  
.XXX ± .005  
.XXXX ± .001

RoHS COMPLIANT: NO

MATERIAL:

N/A

FINISH:

N/A

DRAWN BY: SWN

**DRAWING APPROVED BY ECR**

THE INFORMATION CONTAINED IN THIS DRAWING IS THE SOLE PROPERTY OF STAR HEADLIGHT & LANTERN CO., INC.. ANY REPRODUCTION IN PART OR AS A WHOLE WITHOUT THE WRITTEN PERMISSION OF STAR HEADLIGHT & LANTERN CO., INC. IS STRICTLY PROHIBITED.

**STAR HEADLIGHT & LANTERN CO., INC.**

455 Rochester St. Avon NY 14414  
Ph:(585) 226-9500 Fax: (585) 226-2029

MODEL: 66 SERIES

TITLE:  
MODEL DRAWING

DWG. NO.

66 SERIES

REV

D

SCALE: 1:2

DO NOT SCALE FROM DRAWING

SHEET 1 OF 1