

## BEACON BUDDY™ INSTALLATION INSTRUCTIONS



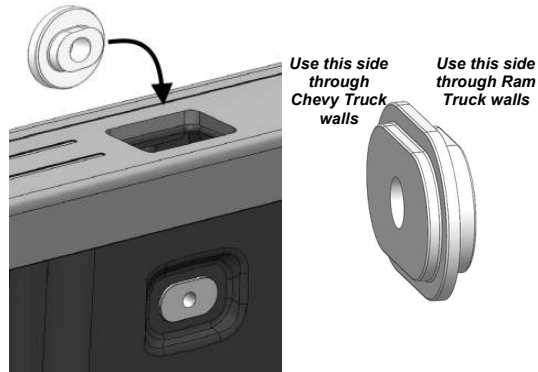
WHEN INSTALLING, YOU **MUST** NOTE THE FOLLOWING:

- DO NOT OBSTRUCT THE THIRD BRAKE LIGHT !!
- ENSURE ALL LIGHTING HAS AN UNOBSTRUCTED VIEW FROM ALL APPLICABLE DIRECTIONS.

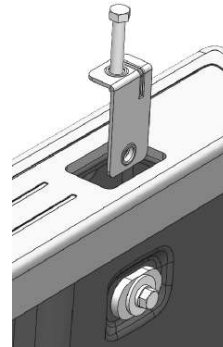
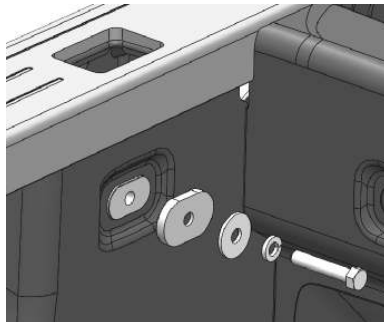
### **Front Stake Pocket Mounting**

1. Insert the step washer into the stake pocket, pressing the oval raised area through the corresponding hole in the side of the truck bed.

*Note: The circular step washer is used for the Ford vehicles. The oval step washers are two sided. Use the thicker side for Ram trucks and the thinner side for the Chevrolet trucks.*



2. Holding the step washer in place, feed the 3/8" x 2" bolt through a lock washer, flat washer, oval cup and then through the step washer in the bed wall.
3. **Optional:** To aid installation, temporarily thread a 3/8" X 2-1/2" bolt into the threaded insert on the top of the bracket.



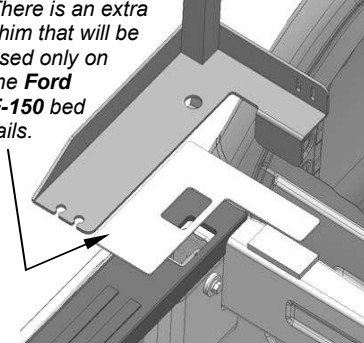
4. Carefully position the Bed Bail Bracket inside the bed wall, sliding the 3/8" X 2" bolt, with the hardware, through side and threading it into the bed rail bracket. **Take care that you DO NOT cross thread.** Tighten the bolt, securing the Bed Rail Bracket in place.



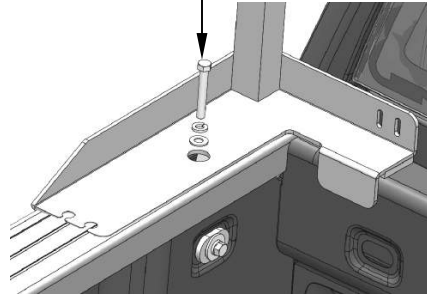
5. If applicable, remove the temporary bolt installed in Step 3.
6. If your truck has a bed liner that does NOT extend across the front of the box, use the shim to create a level surface for the Base Plate Bracket.

7. Place the Base Plate Assembly on top of the bed rail and shim.

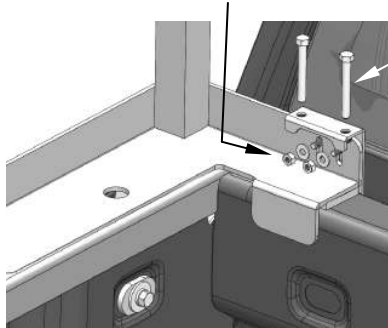
*There is an extra shim that will be used only on the Ford F-150 bed rails.*



8. Secure the Base Plate Assembly using the 3/8" X 2" bolt, lock washer, and flat washer, screwing it into the threaded insert in the Bed Rail Bracket.



9. Slide the Hook Bracket between the truck cab and the bed and maneuver it so that the studs fit through the slots in the Base Plate Assembly. Loosely secure them together using the washers and nuts.



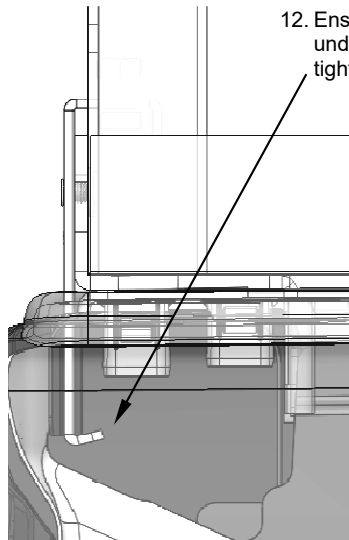
10. Insert the 5/16" bolts into the top of the Hook Bracket and tighten them until they are approximately one inch from the Base Plate Assembly.



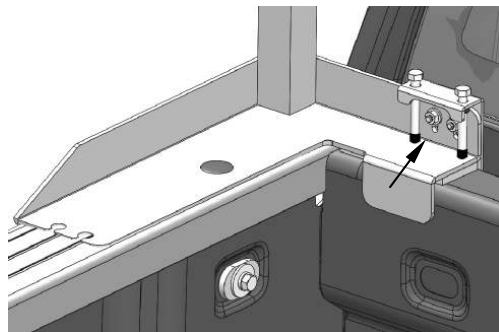
11. Install the protective caps over the ends of the bolts.



12. Ensure that the lower bend of the Hook Bracket is hooked underneath the lower edge of the truck and then carefully tighten the bolts until the fixture is snug.



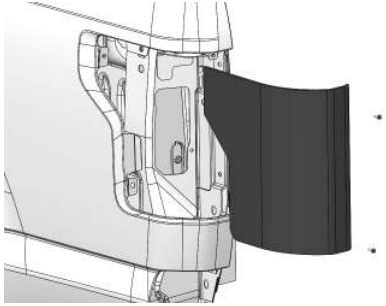
13. Tighten the nuts in front of the Hook Bracket securing everything.



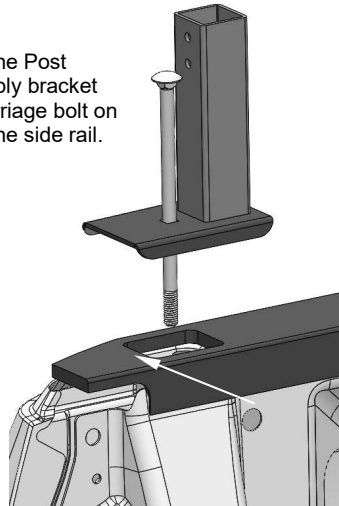
11. Proceed to the Adapter Insert Mounting instructions.

### **Rear Stake Pocket Mounting**

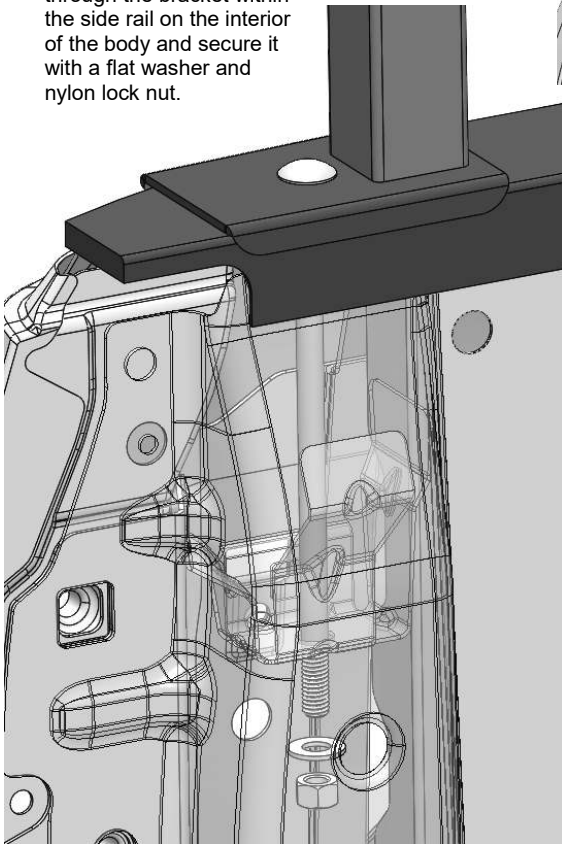
1. Remove the two screws securing the rear tail light assembly and slide the light housing away from the body.



2. Place the Post Assembly bracket and carriage bolt on top of the side rail.



3. Feed the carriage bolt through the bracket within the side rail on the interior of the body and secure it with a flat washer and nylon lock nut.

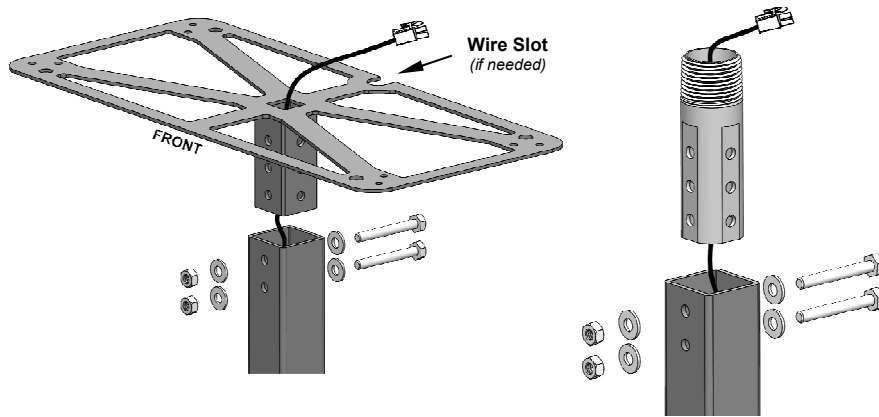


4. Follow the instructions on the next page to mount the appropriate Adapter Insert for your light.

5. Route any needed wiring through the body and post, then reinstall the tail light assembly.

**Adapter Insert Mounting**

1. Using the diagram below, attach the minibar or beacon Adapter Insert to the Beacon Buddy post assembly.
2. Route the enclosed wire harness through the Adapter Insert and post assembly with the connector protruding from the top of the bracket as pictured below.
3. Depending upon your light, plug the connector into the light or remove the connector and connect the wires to your light.
4. Following the mounting instructions enclosed with the light, mount the light to the proper assembly, feeding the wire harness into the post assembly. **Take care not to pinch the harness while assembling!!**



<u>Harness Wire</u>	<u>Minibar Wiring</u>	<u>Beacon Wiring</u>
Red .....	Power .....	Power .....
Black .....	Ground .....	Ground .....
White .....	Synchronization .....	Synchronization .....
Green .....	*Not Used* .....	Pattern Select .....

If you have any questions concerning this or any other product, please contact our **Customer Service Department** at (585) 226-9787.

If a product must be returned for any reason, please contact our Customer Service Department to obtain a Returned Materials Authorization number (RMA #) before you ship the product back. Please write the RMA # clearly on the package near the mailing label.



**NOTICE**

Due to continuous product improvements, we must reserve the right to change any specifications and information, contained in this manual at any time without notice. Star Headlight & Lantern Co., Inc. makes no warranty of any kind with regard to this manual, including, but not limited to, the implied warranties of merchantability and fitness for a particular purpose. Star Headlight & Lantern Co., Inc. shall not be liable for errors contained herein or for incidental or consequential damages in connection with the furnishing, performance, or use of this manual.